

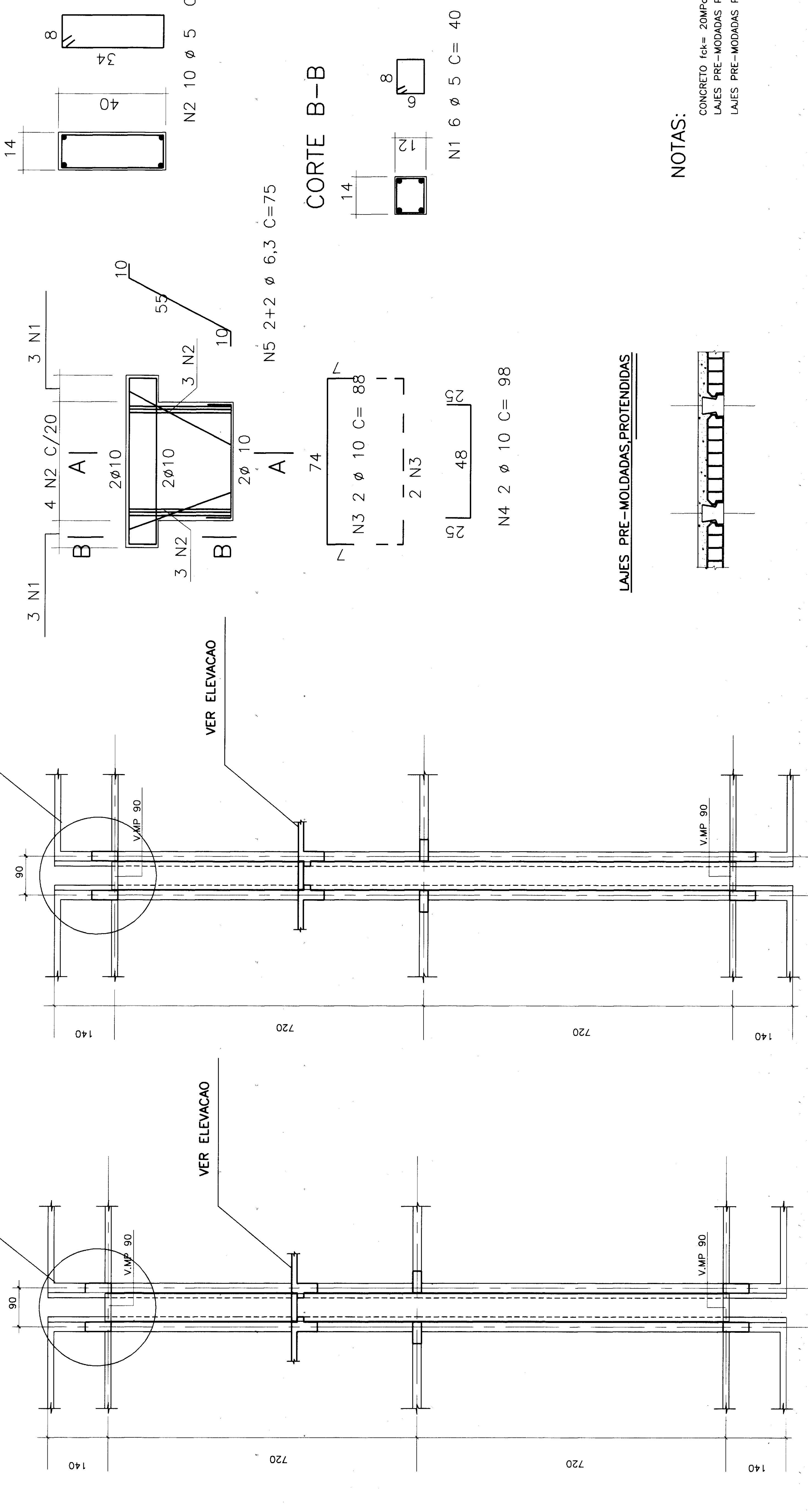
# V.M.P 90 ( 4X )

## DETALHE 1

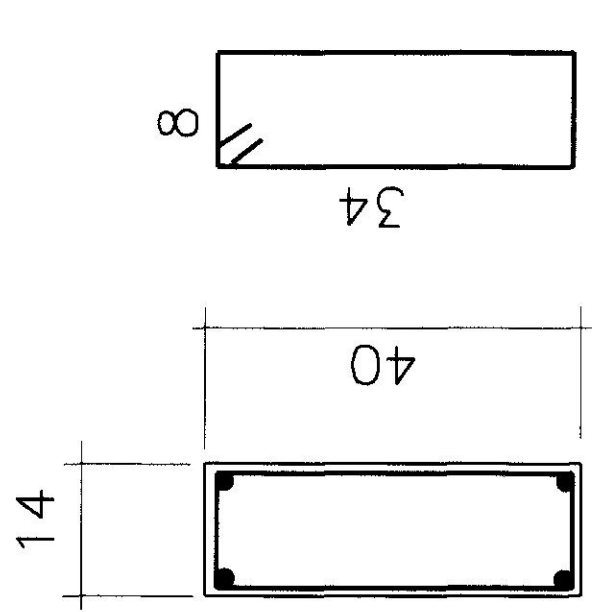
### 1 PAVIMENTO

### COBERTURA

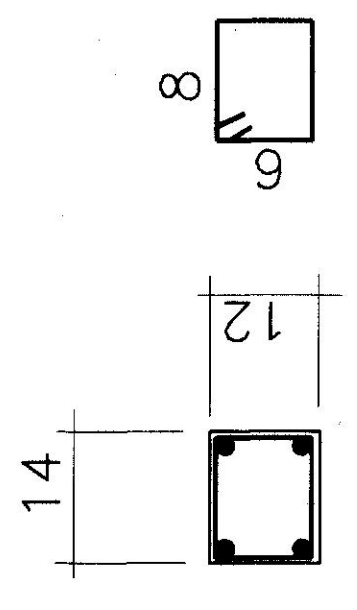
## DETALHE 2



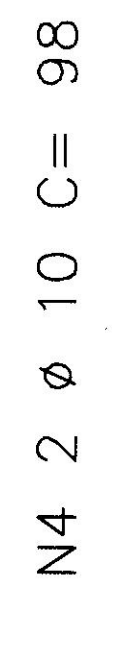
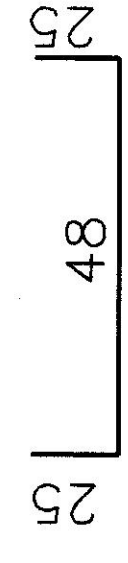
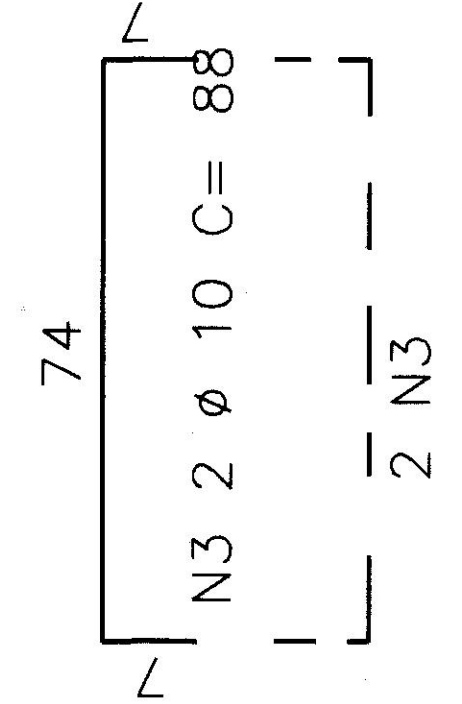
## CORTE A-A



## CORTE B-B



N5 2+2 Ø 6,3 C=75



**LISTA DAS BARRAS**

POS. CASALCAER	Ø	QUANT.	COMPARTIMENTOS
1	2	3	4
1	5	24	40
2	5	40	96
3	10	16	360
4	6,3	16	144
5	6,3	16	120

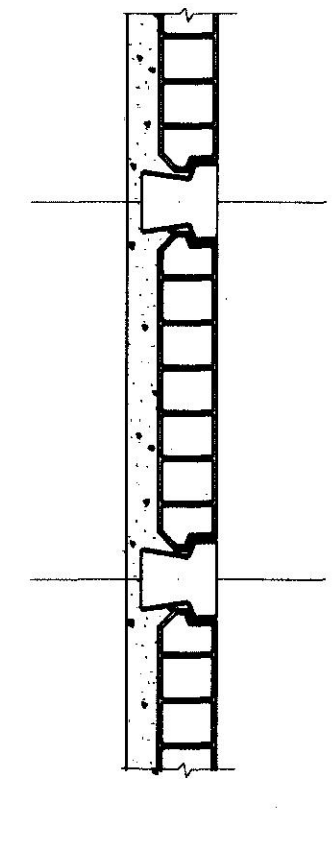
**RESUMO CASA CA60B**

Ø	COMPARTIMENTOS	M <sup>2</sup> /m	PESO K
5,0	48,00	0,12	3
6,3	12,00	0,25	3
8	12,00	0,40	3
10	21,92	0,63	16
12,5		0,00	
16		1,60	
20		2,50	
25		4,00	
TOTAL			26

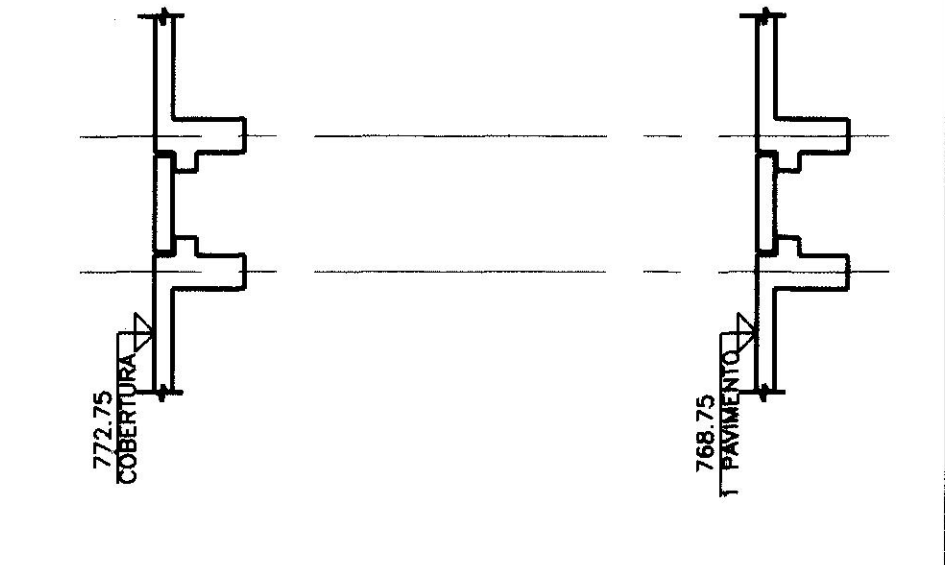
### NOTAS:

- CONCRETO fck= 20MPa
- LAJES PRE-MOLDADAS PROTENDIDAS H=11cm P/ COBERTURA
- LAJES PRE-MOLDADAS PROTENDIDAS H=12cm P/ LAJE DE PISO

### LAJES PRE-MOLDADAS PROTENDIDAS

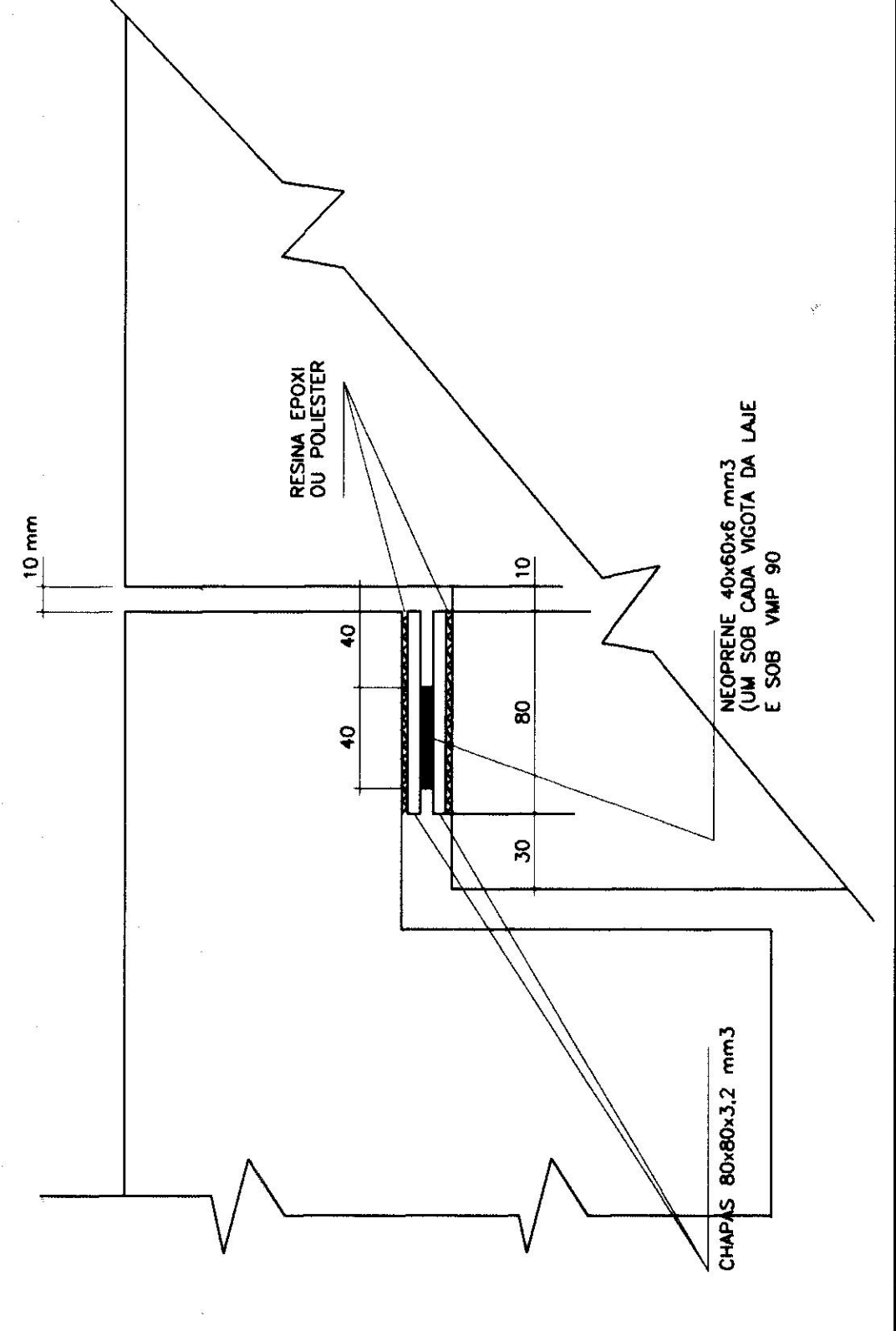


### ELEVACAO



### DETALHE 2

MEDIDAS EM MILIMETROS



Instituto de Edificações  
 Universidade de São Paulo  
 Unidade/Organ. BL-2G-8881  
 Código  
 Área Técnico ESTRUTURA Estágio PROJETO EXECUTIVO  
 Título do Trabalho FORMAS E ARMADURAS DA FAXA DE ACOPLAMENTO  
 Departamento CLAUDIO NORONHA Folha nº 7  
 Autor do Projeto ENG. JOAO Escala 1:50 / 1:20 Desenho nº 42851  
 Verificação Data 07/97 Arquivo MP/BL2G8881

Rel. 35